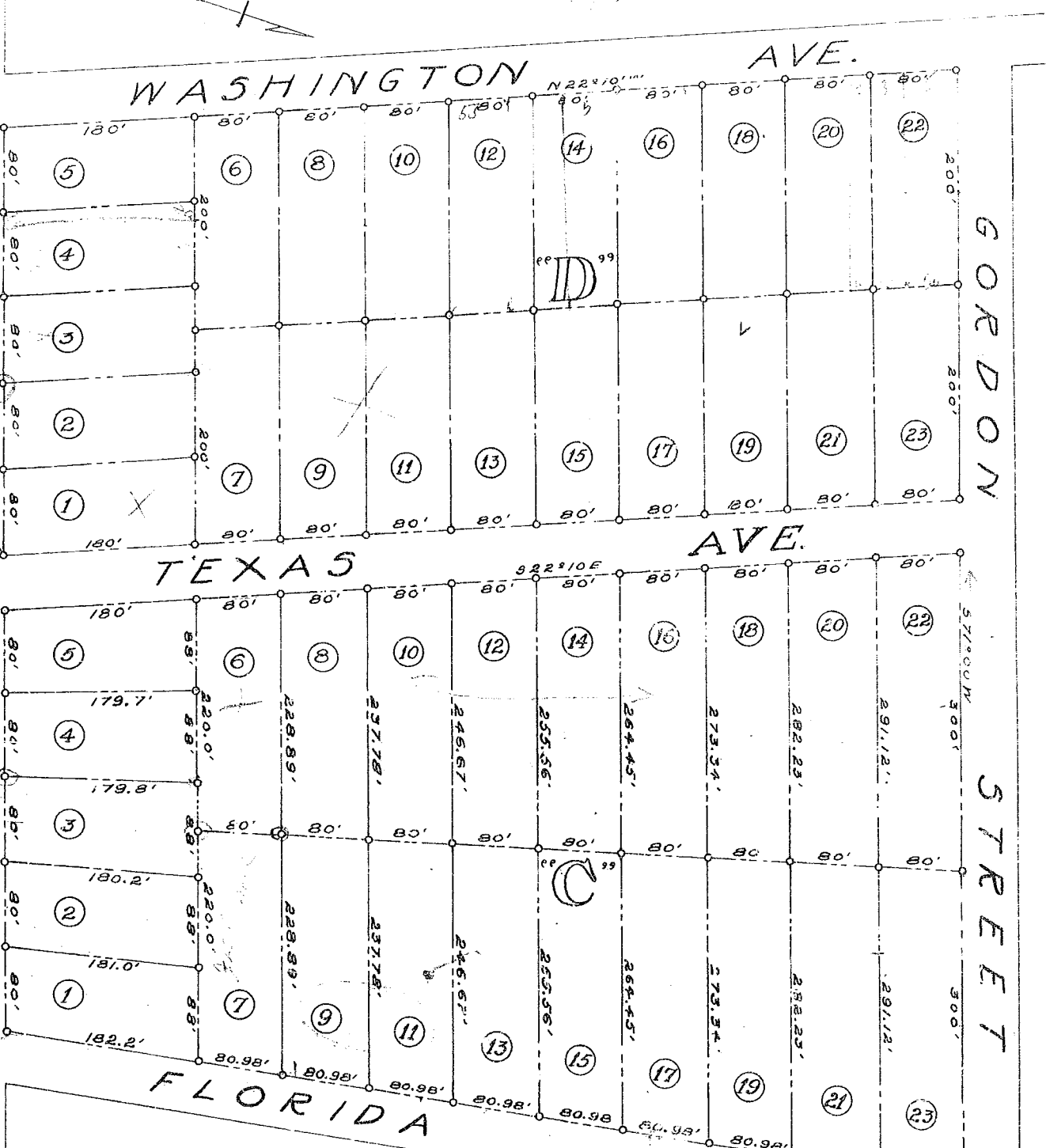


EASLEY BRIDGE ROAD



FLORIDA AVE.

BLOCKS "C" AND "D"
 OF
 HIGHLAND SUB-DIVISION
 OWNED BY JULIA D. CHARLES
 NEAR GREENVILLE, S. C.
 Scale: 1" = 100' Feb. 1920.

ORIGINALLY SURVEYED
 AND PLATTED BY W. D. NEVES, C. E.

LAI D OUT AND REPLATTED BY
 Fitzpatrick-Terry Co., Engrs.

BAD COPY